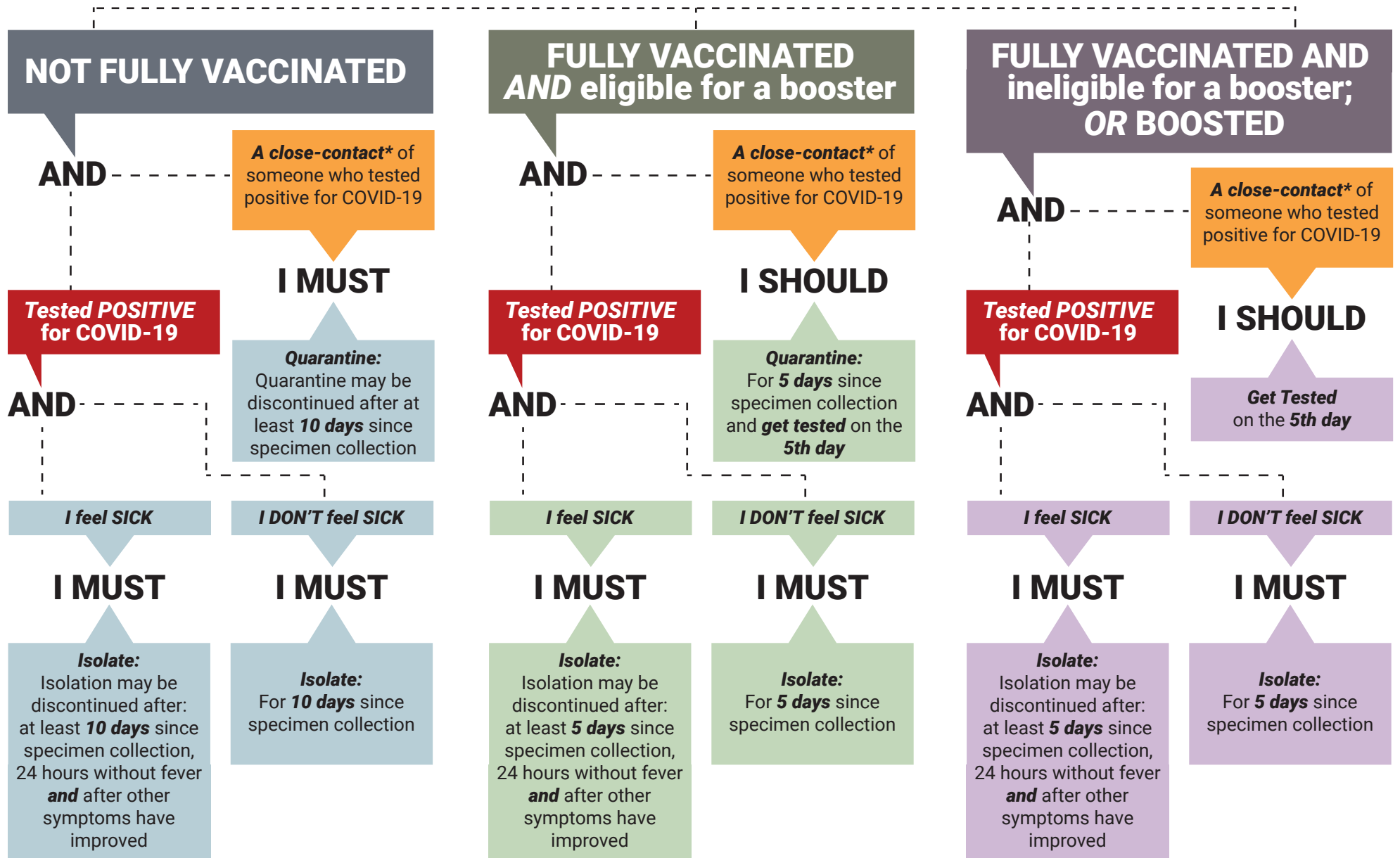


I AM



Isolation and Quarantine – as of January 9, 2022

Based on Executive Order 2021-32 and DPHSS Guidance Memo 2021-16 Rev. 1.

For official guidance, [CLICK HERE: dphss.guam.gov/wp-content/uploads/2022/01/Guidance-2021-16-Rev1-signed.pdf](https://dphss.guam.gov/wp-content/uploads/2022/01/Guidance-2021-16-Rev1-signed.pdf)

*Close contacts are someone who was less than 6 feet away from an infected person (laboratory-confirmed or a clinical diagnosis) for a cumulative total of 15 minutes or more over a 24-hour period. For example, three individual 5-minute exposures for a total of 15 minutes.

(Source: cdc.gov/coronavirus/2019-ncov/your-health/quarantine-isolation.html)

