

LEO PALACE RESORT

221 Lake View Drive
 Yona, GU 96915
 Tel: 1 (671) 471-0062; Fax: 1 (671) 471-0025
 www.leopalaceresort.com



LOCATION

A 30-minute car ride from the airport, Leo Palace Resort sits in the Manenggon Hills, 2.5 times the size of Disneyland and Disney Sea combined. Everything your guests need can be found in one compound.

GENERAL INFORMATION

A sprawling resort, Leo Palace features 426 guest rooms, condominiums, and luxury suites. The compound features a ballroom and comprehensive banquet facility, as well as luxury pool and water slide, and a number of athletic fields to accommodate visiting sports teams.

DINING & ENTERTAINMENT

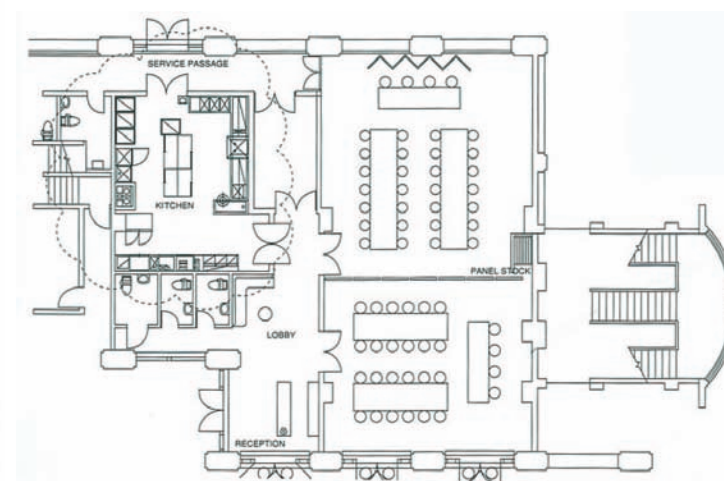
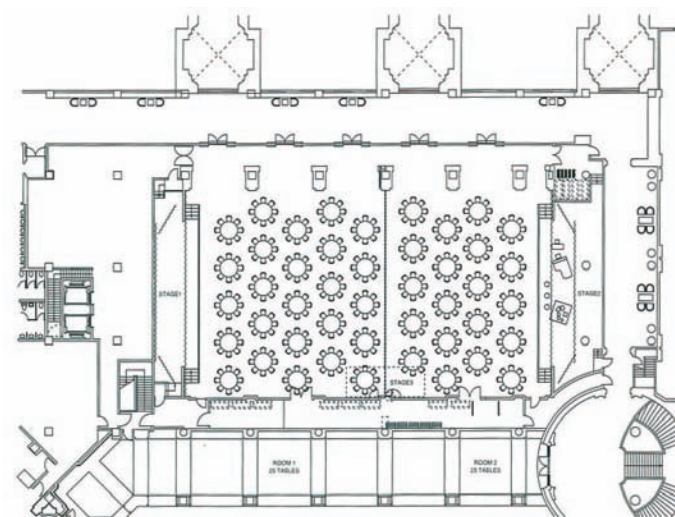
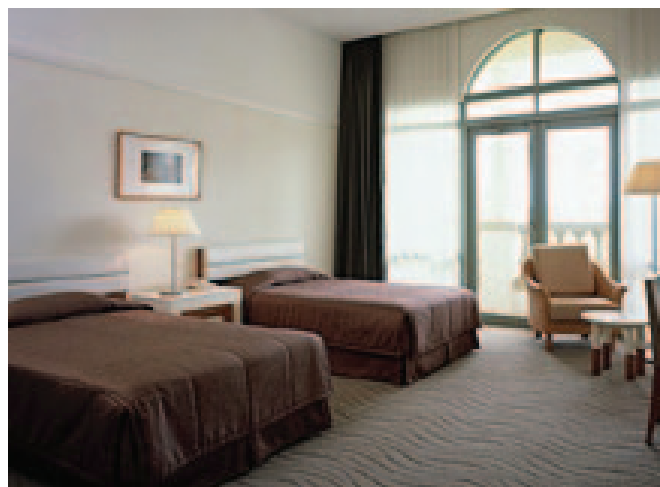
Guests can enjoy European cuisine at Feeregalo, Japanese at Iki, Asian fusion at Tenku Yuuzen, light fare at Lago, barbecue at Arco, cocktails at Amika, or relax at the Sana sports bar. A 36-hole golf course offers guests breathtaking views while they're teeing off, or they can stay indoors for bowling, the arcade, or karaoke.

FACILITIES

Known as a forerunner in the sports arena, Leo Palace offers guests use of volleyball courts, two soccer fields, competitive swimming pools, a cycling course, jogging track, two softball fields, two baseball fields, and a golf course with country club. Additional amenities include pool with waterslide, bowling alley, arcade, convenience store, karaoke lounge, Destination Spa, airport transfer, wedding chapel, guest shuttle, and use of facilities at Westin Resort Guam in Tumon.

BANQUETS & CONFERENCES

A comprehensive banquet facility is available for use, and audio and visual equipment may be provided including projector screen and wireless microphones.



BALLROOM	AREA (Sq. Ft.)	CAPACITY BY FLOOR SETUP	
		Banquet	Cocktail
Zefilo Convention Center	9,472	450	800
Brizo Ballroom	1,786	50	64



ONWARD BEACH RESORT

445 Gov. Carlos G. Camacho Rd
 Tamuning, GU 96913
 Tel: 1 (671) 647-7777; Fax: 1 (671) 647-7793
 www.onwardguam.com



LOCATION

Onward Beach Resort is nestled in Tamuning, between the southern end of the Tumon Bay area and bustling East Agana Bay.

GENERAL INFORMATION

With 430 guest rooms and suites, Onward Beach Resort has a number of stay options as well as an expansive water park and beach access for guests to enjoy. As a member of the Onward family. The hotel offers guests access to Onward Mangilao Golf Club and Onward Talofofo Golf Club in central and southern Guam.

DINING & ENTERTAINMENT

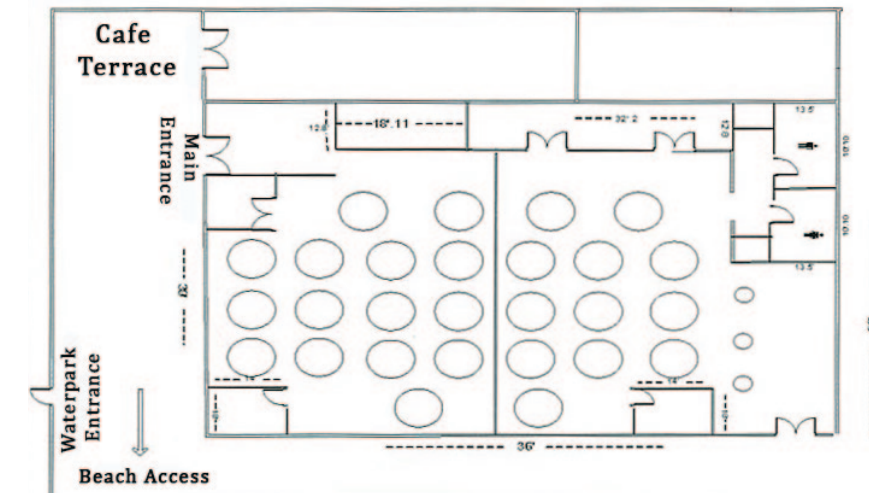
Guests at Onward may enjoy an international buffet at Le Premier, Japanese at Sagano, Italian at Caravel, pastries and sandwiches at the Plaza, the well-known Onward BBQ & Polynesian Dinner Show, and cocktails at either Sleepy Lagoon, Tower Lounge or the Lobby Lounge.

FACILITIES

The Onward Resort Waterpark features water slides, a wave pool, indoor pool, jacuzzi and infant pool. Additional amenities include airport transfer, beach access and rentals, car rental, concierge service (English & Japanese), convenience store, a fitness room, guest shuttle, gift shops, in-room dining, international direct-dial telephone, laundry, massage services, public Internet, sauna, taxi, tour desk, and water activity service.

BANQUETS & CONFERENCES

Onward has four meeting spaces to meet conference demands, and available audio and visual equipment including podium, projector screen, and microphones.



BALLROOM	AREA (Sq. Ft.)	CAPACITY BY FLOOR SETUP			
		Reception	Classroom	Theater	Cocktail
Oasis	4,016	300	300	500	500
Aqua 1, 2 (combined)	4,850	300	300	500	500
Aqua 1, 2 (individual)	2,425	150	150	200	200
VIP Room (terrace included)	1,562	100	100	100	150
Royal Room	945	70	60	70	70



OUTRIGGER GUAM RESORT

1255 Pale San Vitores Rd
 Tumon, GU 96913
 Tel: 1 (671) 649-9000; Fax: 1 (671) 647-9068
 www.outrigger.com



LOCATION

Outrigger Guam Resort is located in the heart of central Tumon and Pleasure Island shopping district, next to UnderWater World aquarium and Hard Rock Café.

GENERAL INFORMATION

With 600 rooms and luxury suites, Outrigger can accommodate more guests than any other hotel. Its proximity to the luxury boutiques at Duty Free Shoppers Galleria and a variety of dining choices make it ideal.

DINING & ENTERTAINMENT

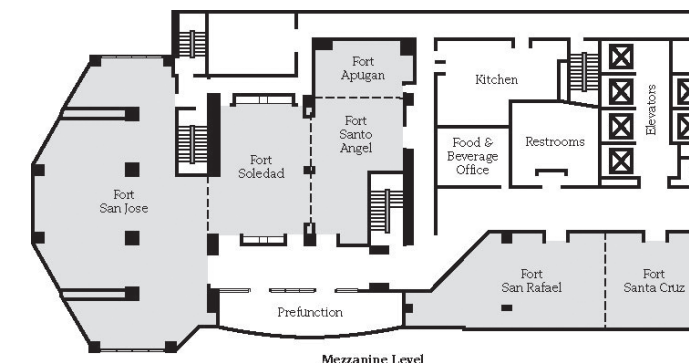
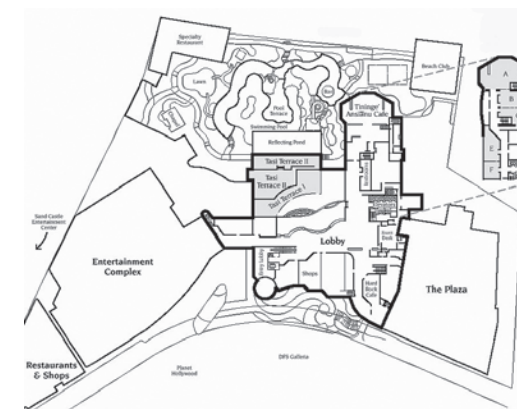
The resort offers Euro-Asian meals at the Palm Café, seafood and local cuisine at Sea Grill, continental at Hard Rock Café, fine dining at La France, and cocktails at the poolside Bambu Bar. Guests have several entertainment options including the aquarium, duty-free shopping (in and out of the hotel), and excellent nightlife.

FACILITIES

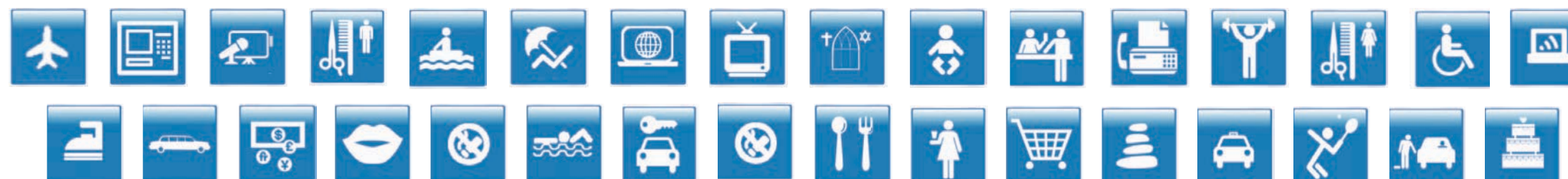
Mandara Spa gives guests top-notch pampering while The Plaza offers high-end shopping options. Additional amenities include airport transfer, baby-sitting, beach access and rentals, business center, car rental, playground, concierge, currency exchange, designated smoking areas, a fitness room, gift shops, in-room wireless Internet access, room service, laundry & dry cleaning, limousine service, secretarial service, taxi, tour desk, water activity service, wedding chapel, and volleyball court.

BANQUETS & CONFERENCES

Aside from wireless Internet in all function areas, Outrigger offers rental for LCD projectors, TVs with DVD or VCR players, wireless microphones, PA system, easels, extension cords, and laser pointers.



BALLROOM	AREA (Sq. Ft.)	CAPACITY BY FLOOR SETUP			
		Theater	Classroom	Reception	Banquet
Fort San Jose	3,200	275	106	350	180
Fort Soledad	1,124	145	56	110	60
Fort Santo Anghet	814	75	30	90	50
Fort Apotguan	416	45	18	35	20
Fort San Rafael	1,260	106	90	110	74
Fort Santa Cruz	785	70	50	70	60
Pre-function Ballroom Foyer	550	-	-	50	-
Tasi Terrace I (outdoor)	3,000	-	-	570	380
Tasi Terrace II (outdoor)	6,000	-	-	300	200



PACIFIC ISLANDS CLUB

210 Pale San Vitores Rd
 Tumon, GU 96913
 Tel: 1 (671) 646-9171; Fax: 1 (671) 648-2474
 www.picresorts.com



LOCATION

PIC is centrally positioned in the heart of Tumon Bay. Its 82,000 square meters of beachfront property stretches along the south central portion of the bay.

GENERAL INFORMATION

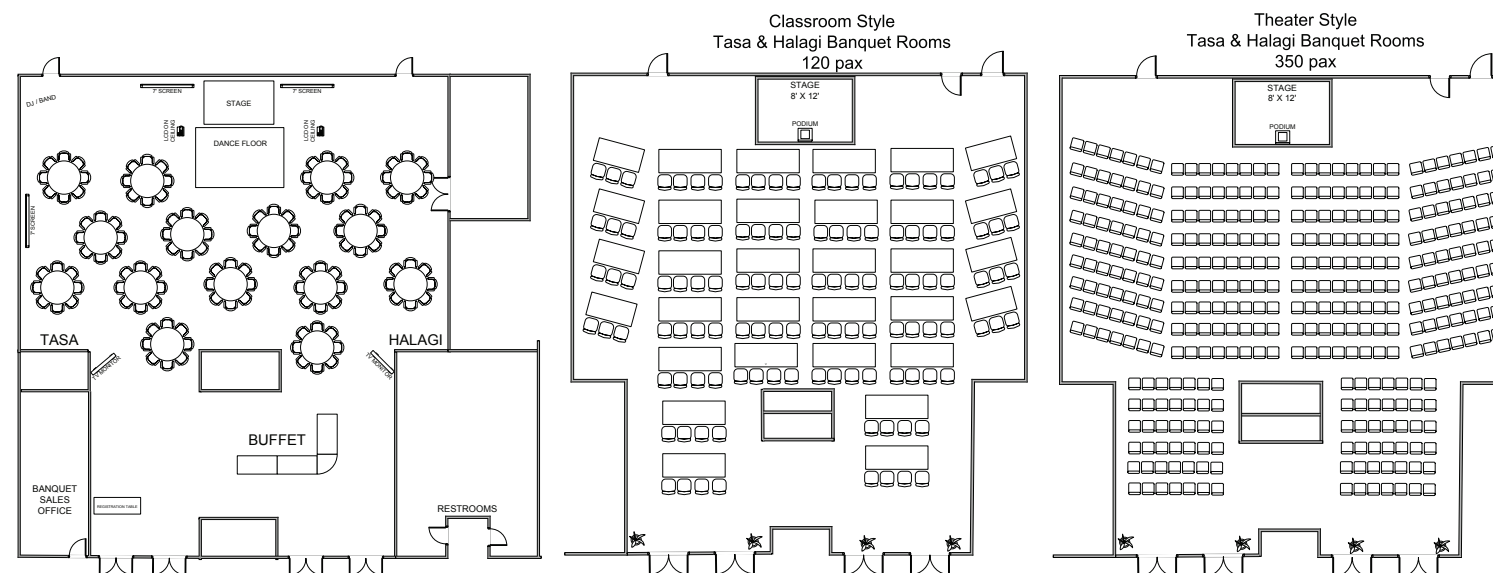
With 781 guest rooms and suites, and property comprised of luscious landscapes and beautiful waterfalls, PIC is truly a resort in itself. Guests have access to more than 70 activities and lessons including tennis, basketball, volleyball, windsurfing, scuba, kayaking, sailing, racquetball and archery.

FACILITIES

Aside from an extensive water park, PIC offers shuttles to and from the nearby shopping district. Guests may also dine at any of the seven hotel restaurants including Skylight international buffet, Bistro fine dining, Café Rock and Roll for continental, Hanagi for Japanese, Welcaruba for Asian cuisine, the Sunset Bar & BBQ, or the Pacific Fantasies Dinner Show. Other facilities include the Jivana Spa for Well-Being, airport transfer, beach access and rentals, car rental, designated smoking areas, executive lounge, gift shop, laundry, limousine service, taxi, tour desk, trolley service, and wireless Internet in lobby

BANQUETS & CONFERENCES

PIC is outfitted with the latest conference and meeting tools including LCD projector, projection screens, podium, overhead projector, 42-inch TV monitors, staging, cordless and wired microphones, sound system, easels, dry erase board, conference call phone capability, and high-speed Internet. Theme setups available include holiday, island, and Cinco de Mayo.



BALLROOM	AREA (Sq. Ft.)	CAPACITY BY FLOOR SETUP			
		Theater	Cocktail	Classroom	Banquet
Tasa Ballroom	1,752	150	180	100	110
Haligi Ballroom	2,150	150	180	100	110
Tasa & Haligi (combined)	3,902	300	350	160	240
Pacific Pavilion	15,000	1,500	1,800	1,000	1,000

